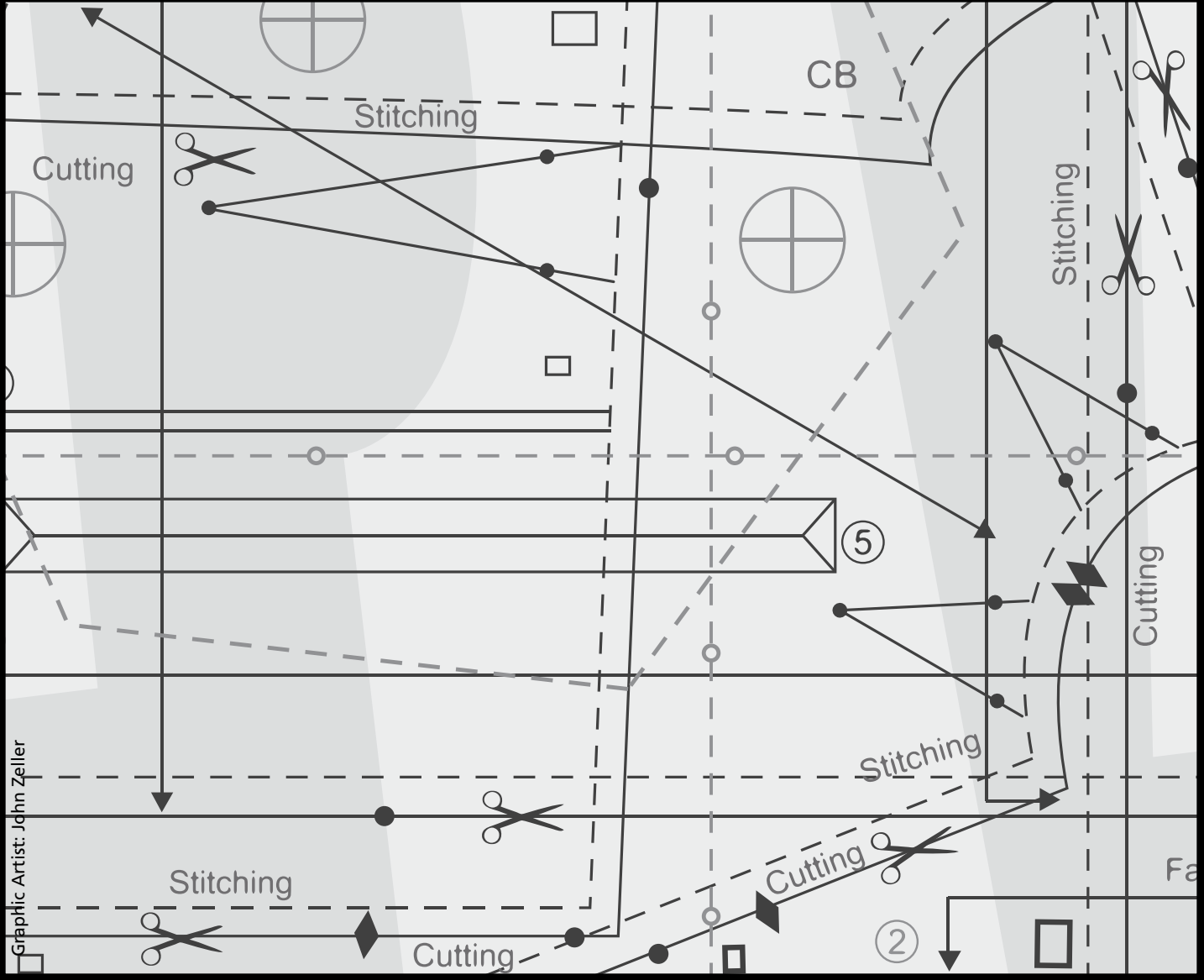


Advanced Sewing Operations Portfolio Patterns

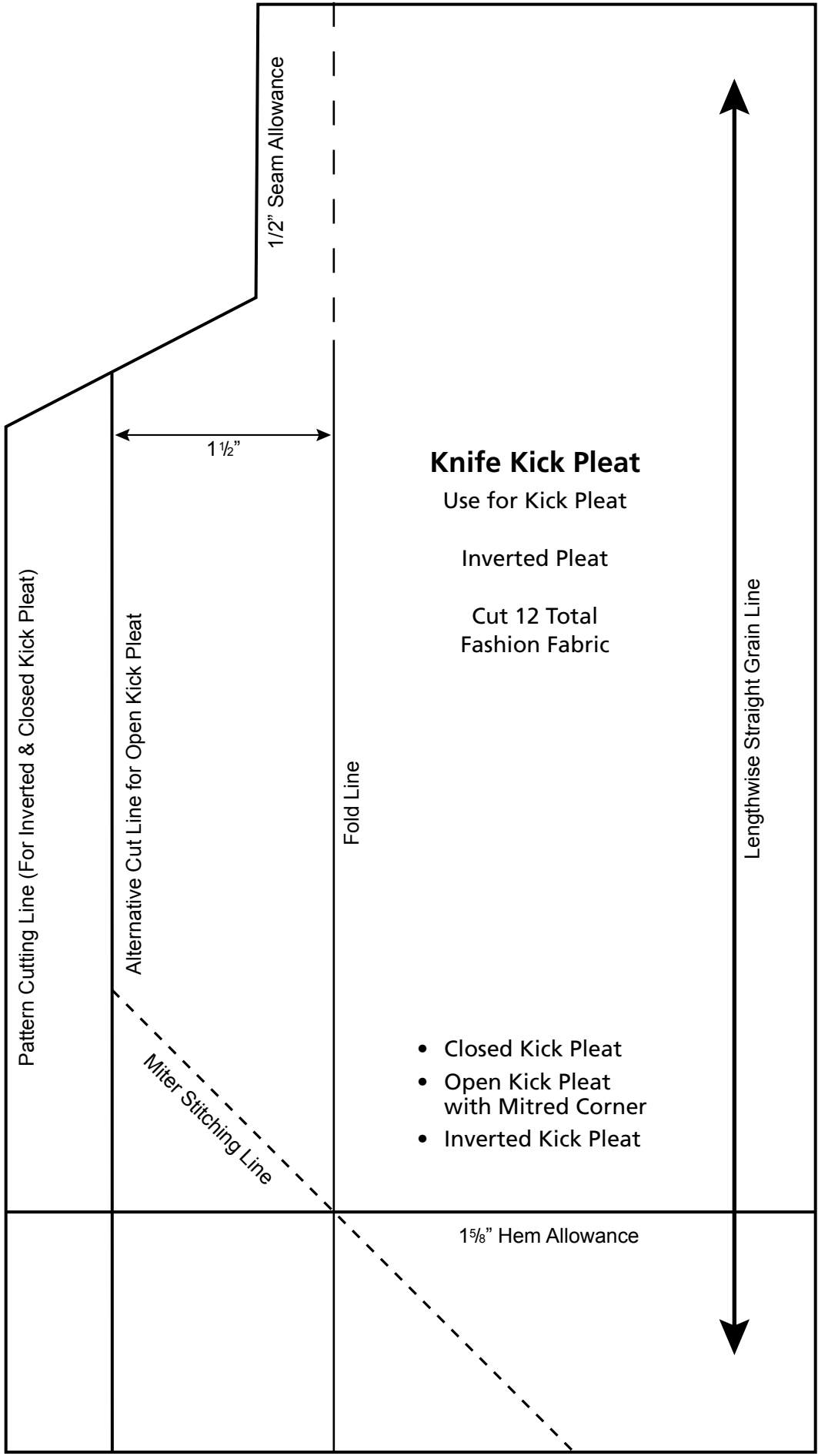
June 2016

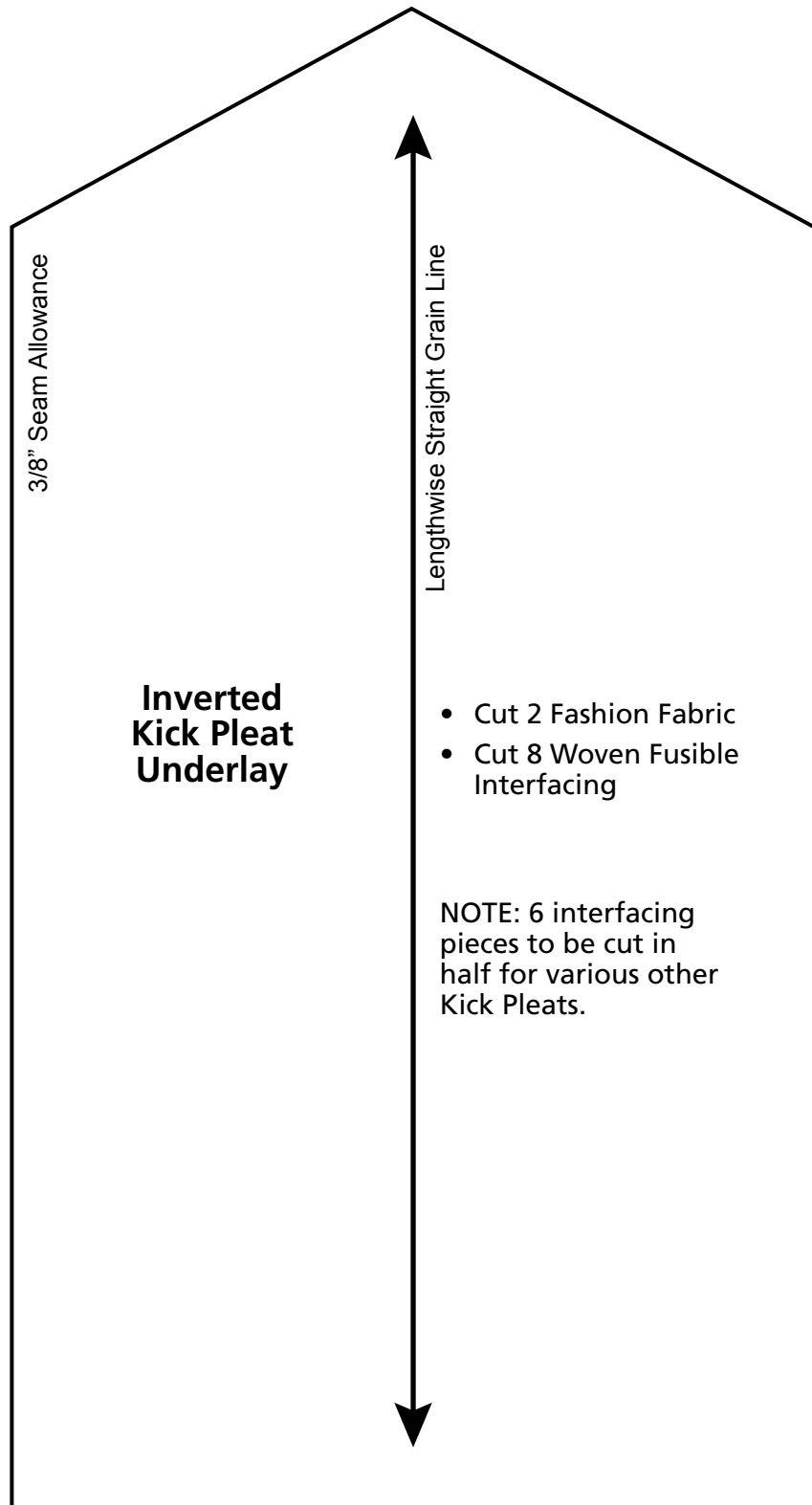
Instructor: Joan McKenna

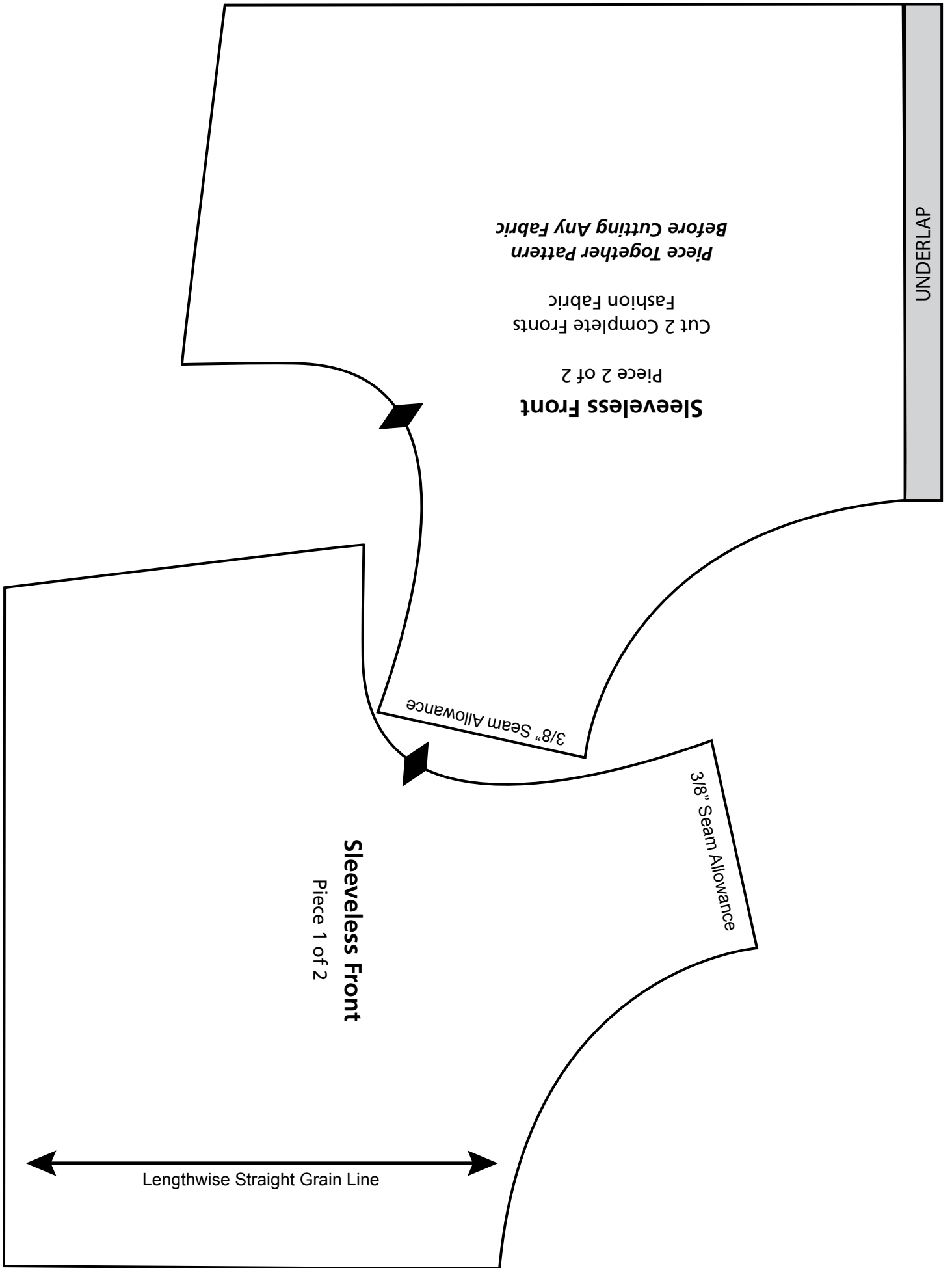
(Print Without Scaling or Shrink to Fit)



Graphic Artist: John Zeller







UNDERLAP

Sleeveless Back
Piece 2 of 2
*Piece Pattern Together
Before Cutting Any Fabric*



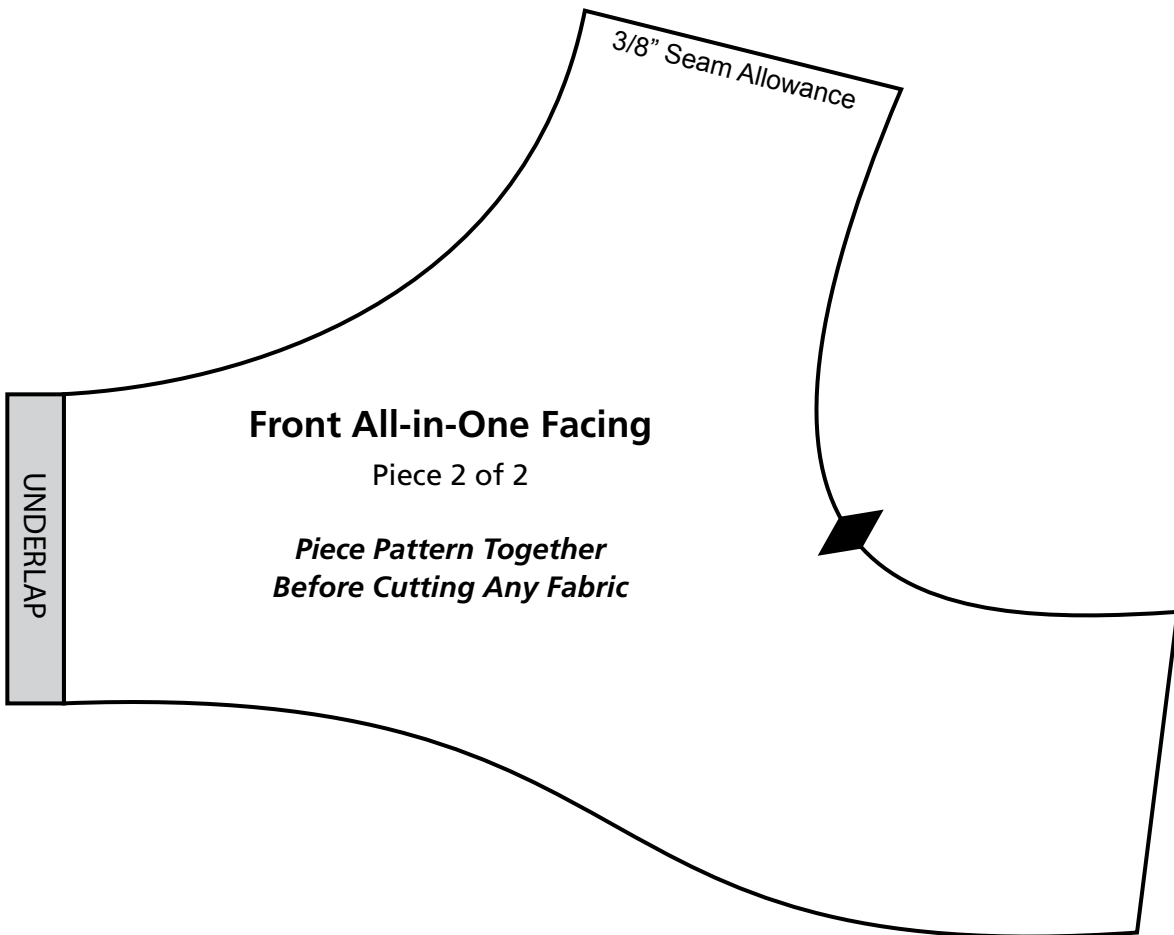
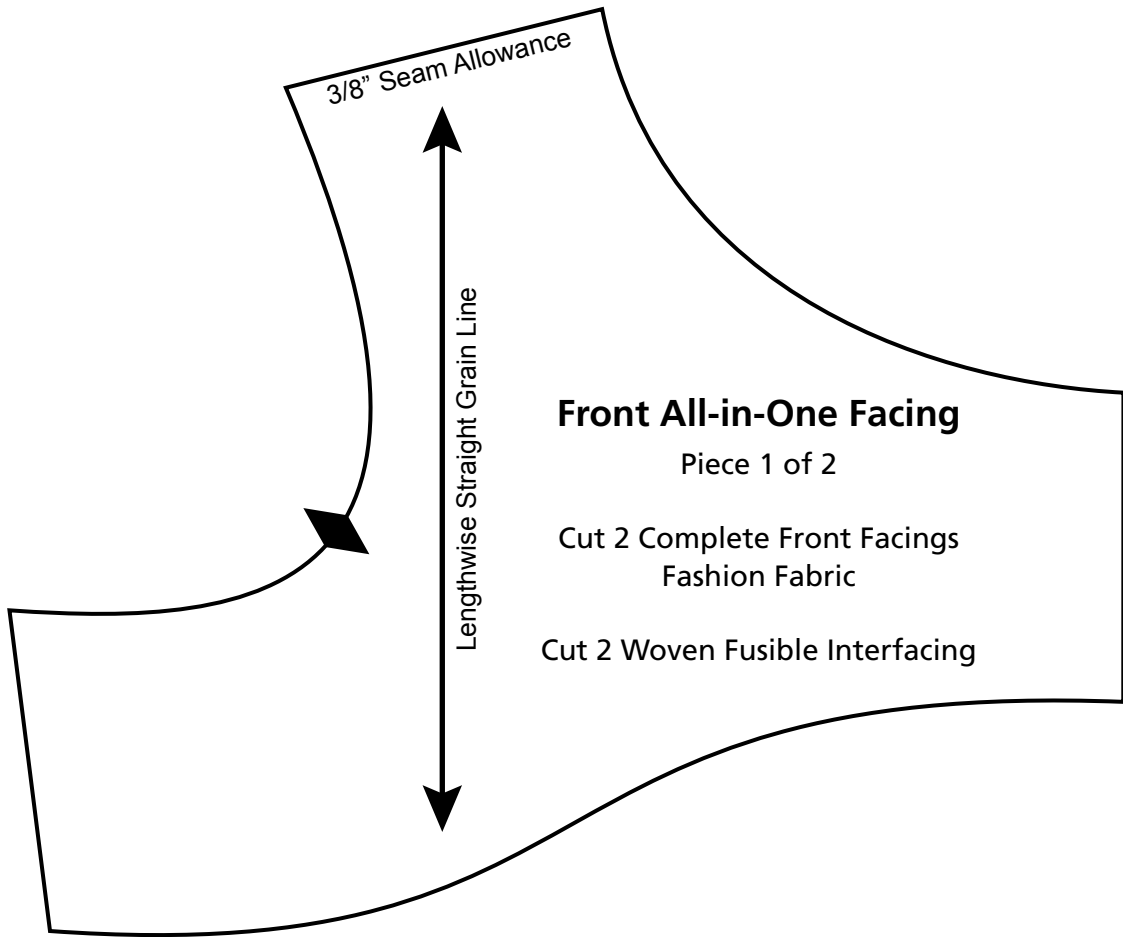
3/8" Seam Allowance

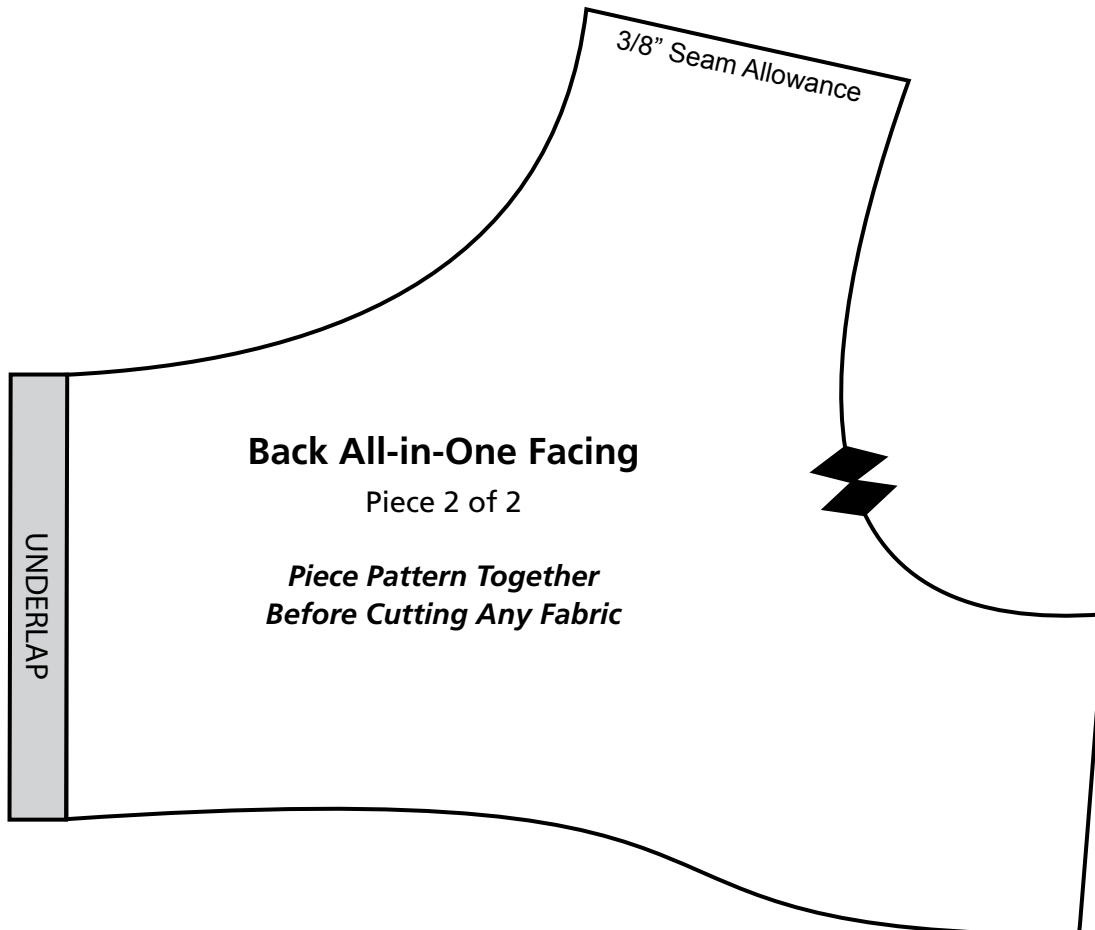
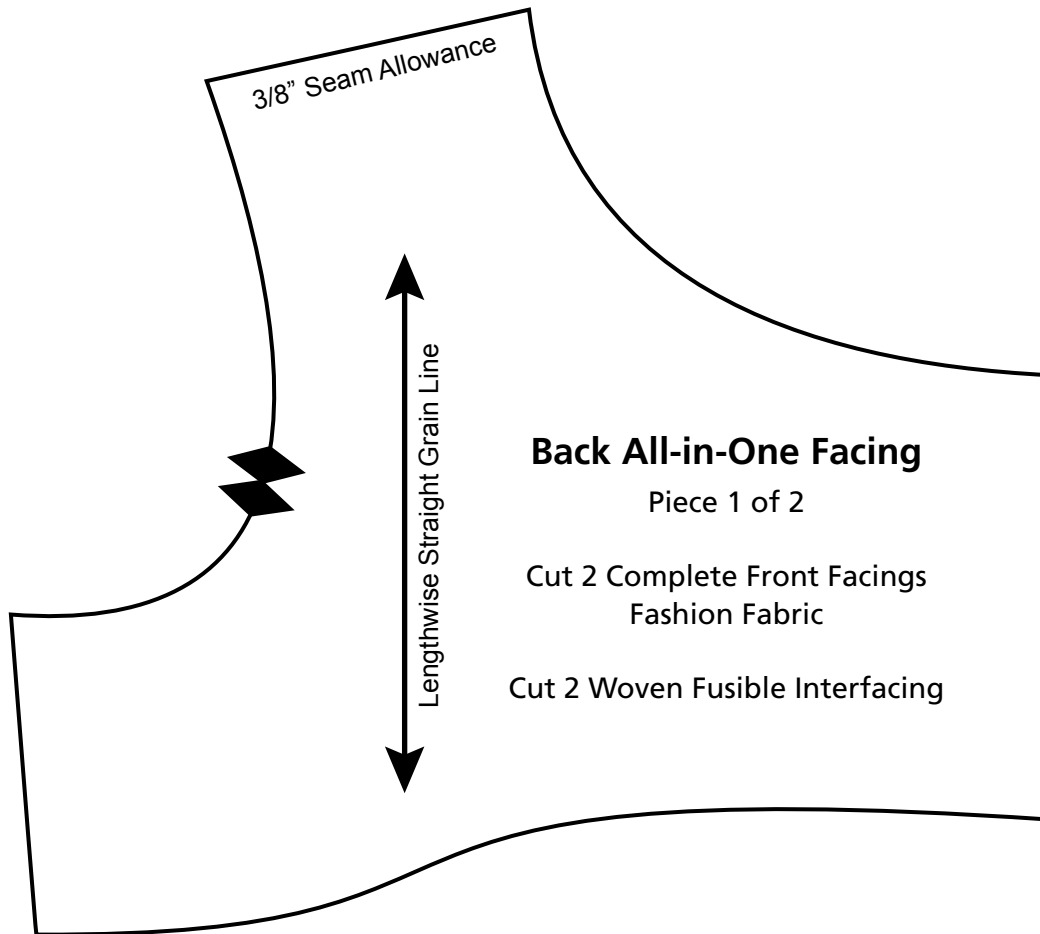


3/8" Seam Allowance

Sleeveless Back
Piece 1 of 2
Cut 2 Complete Backs
Fashion Fabric

Lengthwise Straight Grain Line





Grainline — Lengthwise Warp




Fly Zipper Pants Front

Pattern Piece 1 of 3


Cut 4 — Woven Fashion Fabric

Sample Will Need a 7"
Pants or Jeans Zipper


Seam Line

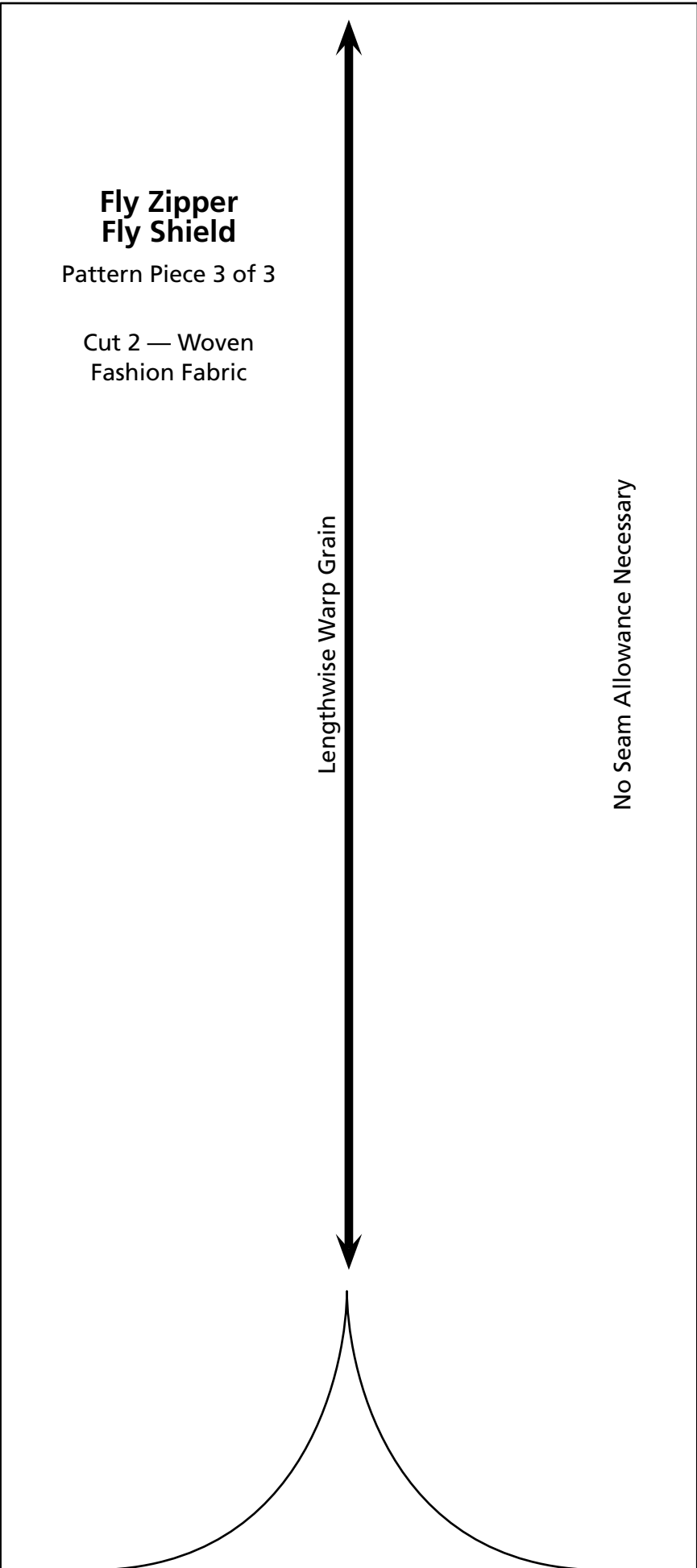
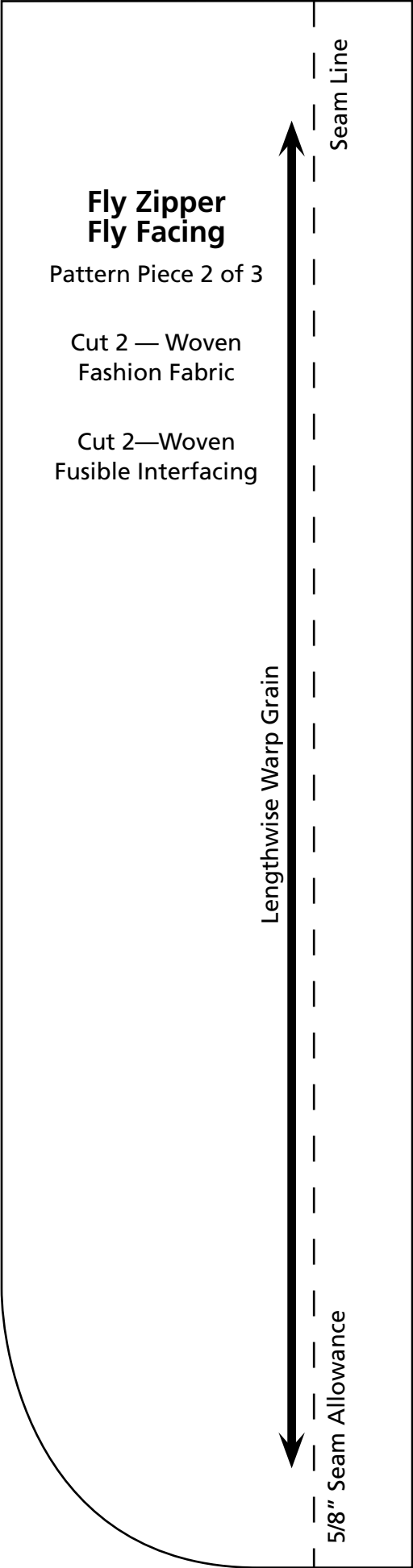


Cutting Line



5/8" Seam Allowance





**Men's Shirt
Lower Sleeve**

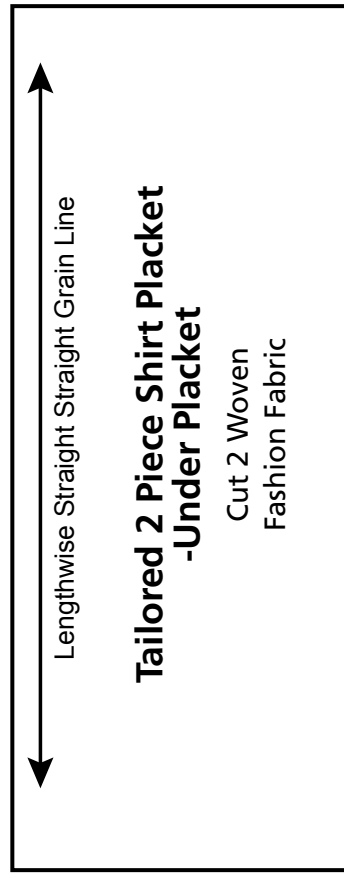
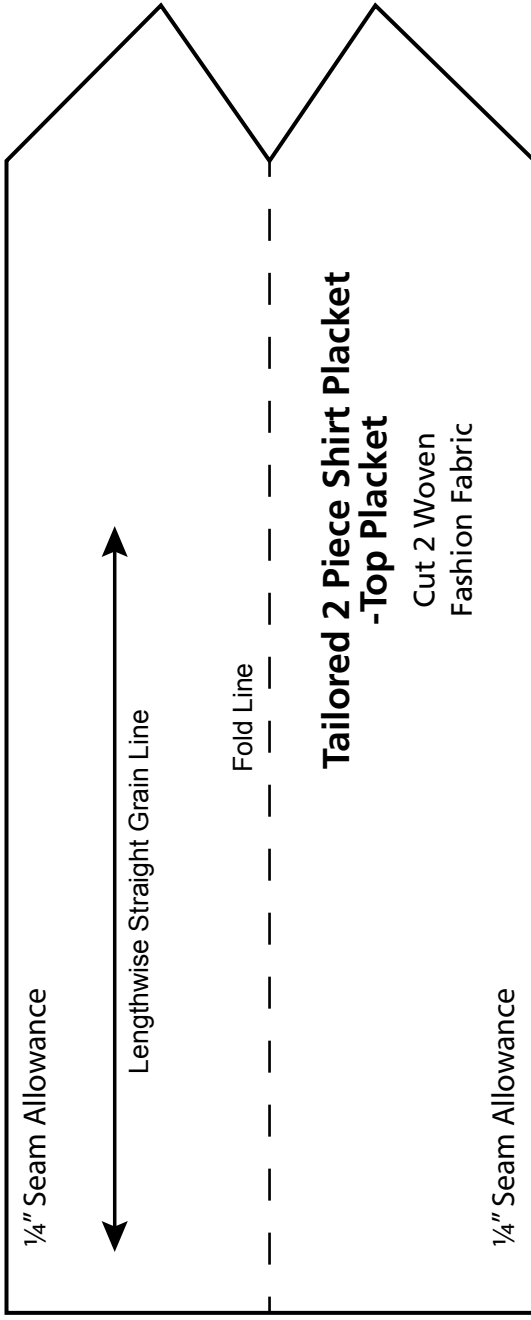
Cut 6 Woven Fashion Fabric

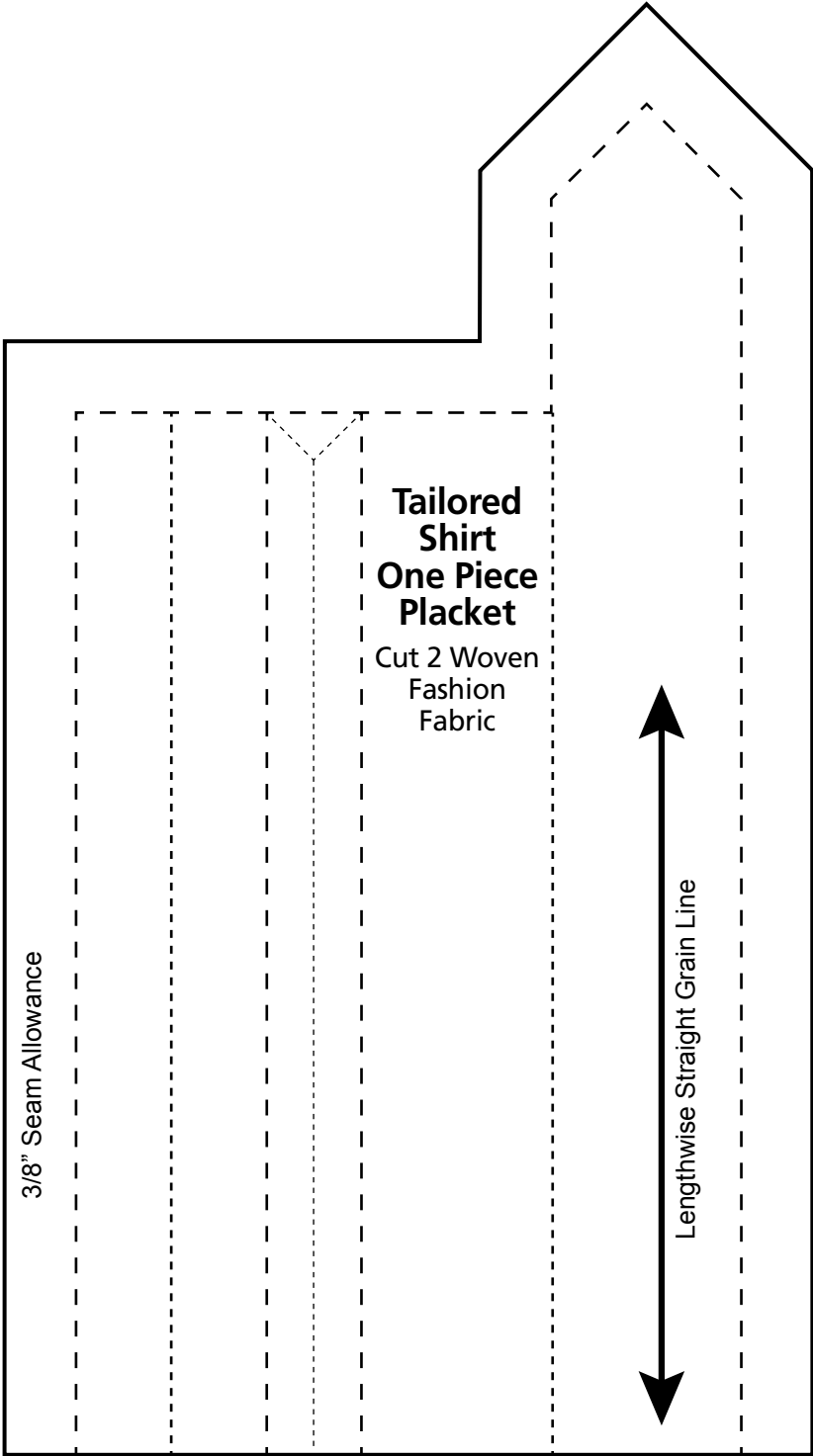
Lengthwise Straight Grain Line

3 1/2 inches

Sleeve
Pleat







Knife Pleats/Box Pleats Release Tucks

Part 1 of 2

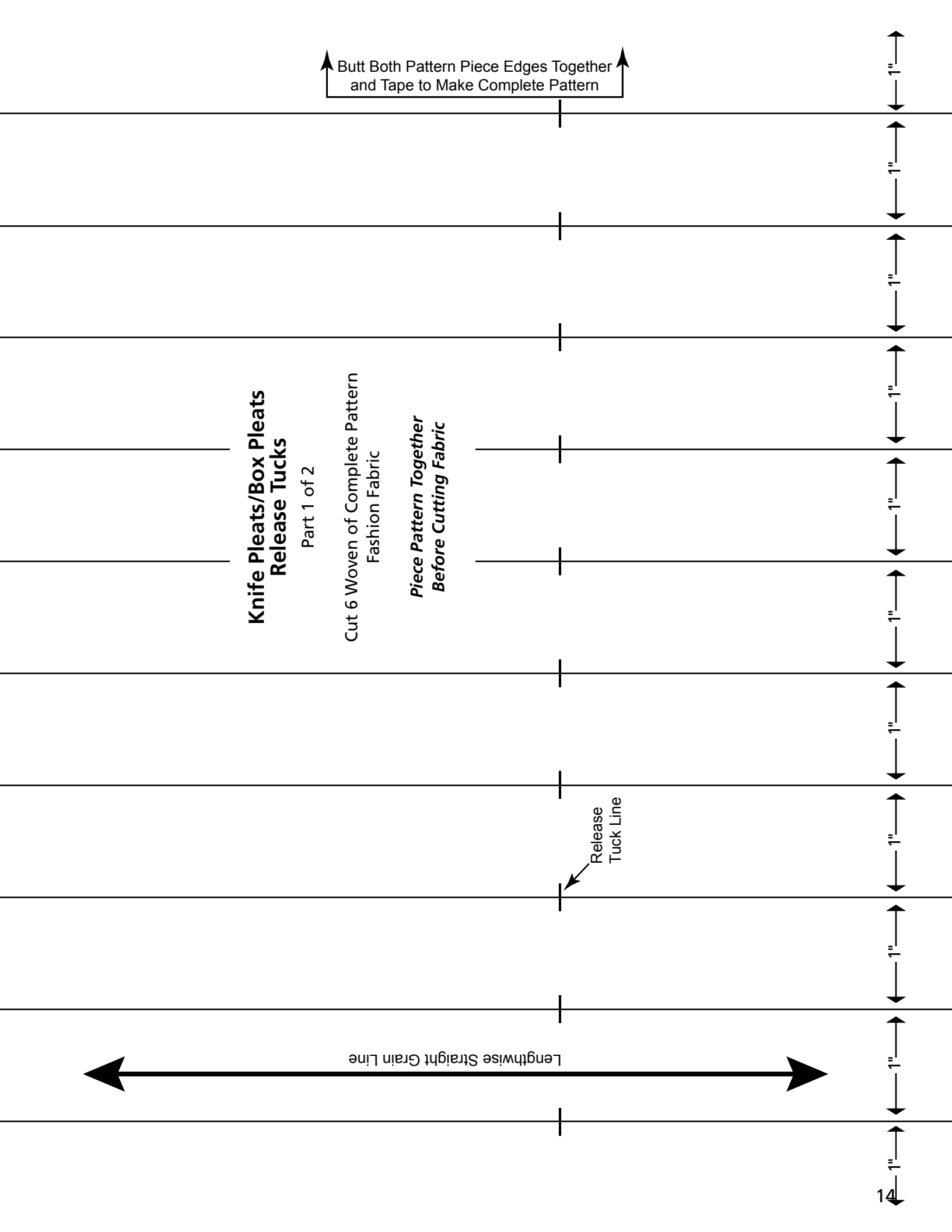
Cut 6 Woven of Complete Pattern
Fashion Fabric

*Piece Pattern Together
Before Cutting Fabric*

Butt Both Pattern Piece Edges Together
and Tape to Make Complete Pattern

Release
Tuck Line

Lengthwise Straight Grain Line



Butt Both Pattern Piece Edges Together
and Tape to Make a Complete Pattern

Knife Pleats/Box Pleats Release Tucks

Part 2 of 2

*Piece Pattern Together
Before Cutting Any Fabric*

*Piece two parts to gether to
make a 8 1/2 x 22 inch pattern.*

